

Eclipse BoostPak

Packaged Gas Booster Systems

Series MH
Version 2

Medium Flow Simplex with Heat Exchanger Option

Parameter	Specification						
	MH3314	MH3412	MH4414	MH4617	MH4619	MH4623	MH4628
Assembly Number	10024870	10024871	10024872	10024873	10024874	10024875	10024876
Booster	HB3314-1/2	HB3412-1/2	HB4414-1	HB4617-1	HB4619-2	HB4623-5	HB4628-5
Minimum Flow (cfh) ^a	50	150	150	150	150	300	150
Maximum Flow (cfh) ^a	5300	11,600	20,400	23,000	17,800	33,000	14,600
Pressure Boost ^a	9	7	7	13	18	26	34
Turndown	106:1	77:1	136:1	150:1	120:1	110:1	100:1
Primary Voltage	b,c,d,e	b,c,d,e	c,d	c,d	c,d	c,d	c,d
Motor Horsepower	1/2	1/2	1	1	2	5	5
Approximate Weight (Lbs.)	870	900	1,000	1,200	1,300	1,520	1,670

Notes: a Ratings are nominal, in CFH natural gas, at standard conditions and depend on customer interface piping.
b 115/230 VAC, 1 ϕ , 60hz
c 230/460 VAC, 3 ϕ , 60hz
d 208 VAC, 3 ϕ , 60hz
e 208 VAC, 1 ϕ , 60hz
NEMA 12 rating; NEMA 7 rating option available (footprint increases with this option)

Dimensional Information [mm (in)]

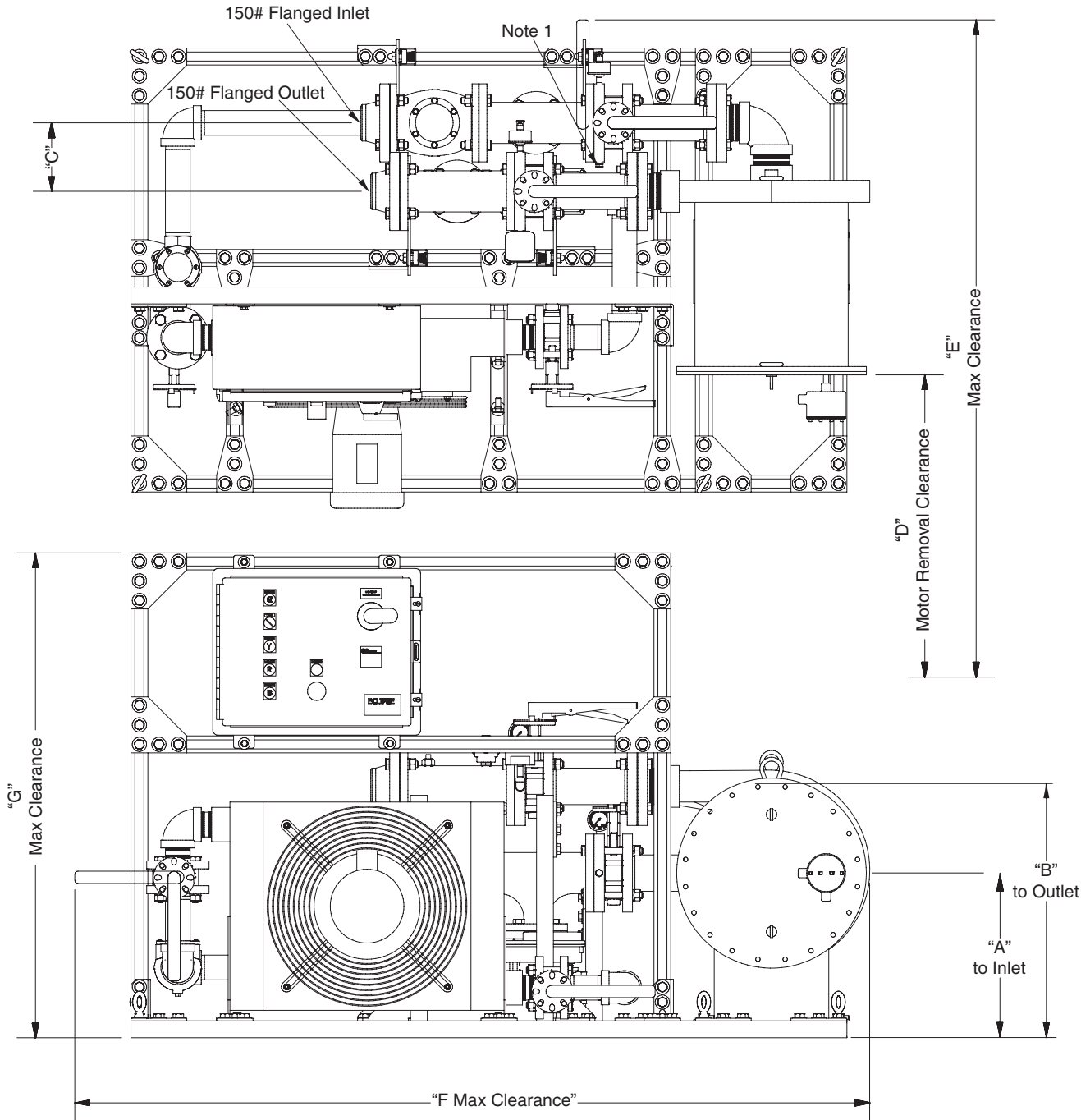
BoostPak	Flange sizes (150#)		Connection Data		
	Inlet	Outlet	A	B	C
MH3314	3	3	402 (15.8)	613 (24.1)	167 (6.6)
MH3412	4	3	364 (14.3)	552 (21.7)	224 (8.8)
MH4414	4	4	402 (15.8)	613 (24.1)	203 (8)
MH4617	6	4	435 (17.1)	684 (26.9)	307 (12.1)
MH4619	6	4	524 (20.6)	822 (32.4)	308 (12.1)
MH4623	6	4	549 (21.6)	895 (35.3)	322 (12.7)
MH4628	6	4	625 (24.6)	1054 (41.5)	316 (12.4)

BoostPak	Maximum Envelope			
	D	E	F	G
MH3314	737 (29)	1603 (63.1)	1943 (76.5)	1183 (46.6)
MH3412	762 (30)	1700 (66.9)	1906 (75.1)	1183 (46.6)
MH4414	762 (30)	1664 (65.5)	1934 (76.1)	1183 (46.6)
MH4617	762 (30)	1773 (69.8)	2025 (79.7)	1183 (46.6)
MH4619	711 (28)	1683 (66.3)	2080 (81.9)	1183 (46.6)
MH4623	889 (35)	2027 (79.8)	2206 (86.8)	1183 (46.6)
MH4628	965 (38)	2162 (85.1)	2362 (93)	1277 (50.3)

Note: All dimensions are approximate.

Dimensions

Medium Flow Simplex with Heat Exchanger Option



Note 1 Pressure Switch Kit location when factory mounted.
Note 2 When Pressure Switch Kit is supplied loose, it shall
 it shall be installed in accordance with local codes.



Offered By:

Power Equipment Company
2011 Williamsburg Road
Richmond, Virginia 23231
Phone (804) 236-3800
Fax (804) 236-3882

www.peconet.com